

KORTHO HOT QUICK CODER-AT

Parts List

HQC-11144



Stock Number: HQC-100

Description: Kortho Hot Quick Coder-AT

System Includes:

AT Control Box, Print Head, Standard Mounting Bracket Assembly, Flat Type Holder with removable handle, Power Cord. This model operates on 115 VAC/60 Hz power.

Note: The HQC-100 can be triggered by a normally open microswitch or a 24 VDC PNP or NPN Photocell. Triggering devices are not included with the system and must be ordered separately. See Page 3 for optional triggering devices.

ADDITIONAL HQC COMPONENTS



Stock No:

Description:

HQC-6-BK	T-11 Black Hot Quick Coder Ink Rolls - 6 Pack
HQC-6-RD	T-14 Red Hot Quick Coder Ink Rolls - 6 Pack
HQC-6-GR	T-17 Green Hot Quick Coder Ink Rolls - 6 Pack
HQC-6-BL	T-12 Blue Hot Quick Coder Ink Rolls - 6 Pack
HQC-6-YL	T-16 Yellow Hot Quick Coder Ink Rolls - 6 Pack
HQC-6-WH	T-15 White Hot Quick Coder Ink Rolls - 6 Pack

Ink Rolls for the Hot Quick Coder - Supplied in 6 Pack Cartons



Stock Number: HQC-100-FTH

Description: Flat Type Holder with removable handle

Additional HQC-100-FTH Flat Type Holders are available to enable setting up codes off line for extremely fast code changes during production. Having a spare eliminates the need to let the active Type Holder cool down for comfortable handling. Print Area: 12mm x 24mm (Approx: 0.5" x 1.0")



Stock Number: HQC-100-FAB

Description: Fine Adjust Collar

The Fine Adjust Collar is installed on the mounting column of the Standard Mounting Bracket Assembly and provides a very precision adjustment capability for the position of the Print Head. Total adjustment range of approximately 1/2".

SPECIAL APPLICATION TYPE HOLDERS



Stock Number: HQC-THCONVEX

Description: Convex Type Holder with removable handle

The HQC-THCONVEX Type Holders are designed for use in applying codes to the bottoms of aerosol cans. The convex shape of the type holder conforms to the curvature of the can bottom. A ribbed rubber mat holds the type and provides a slight cushion to ensure a clear imprint.

Print Area: 12mm x 20mm (Approx: 0.5" x 0.8")



Stock Number: HQC-THCONCAVE

Description: Concave Type Holder with removable handle

The HQC-THCONCAVE Type Holders are designed for use in applying codes along the length of cylindrical parts such as round bottles and cans. The concave shape of this type holder conforms to the curvature of the cylinder and enables multiple lines to be printed. The ribbed rubber mat hold the type and provides a cushion to ensure a clear imprint.

Print Area: 12mm x 24mm (Approx: 0.5" x 1.0")

REPLACEMENT SYSTEM MODULES



Stock Number: HQC-810387

Description: Control Box HQC-AT Complete

The HQC-810387 Replacement Control Box is supplied fused for 115 VAC operation. Power cable not included.



Stock Number: HQC-810819

Description: Print Head HQC-AT

The HQC-810819 Replacement Print Head is supplied complete with connecting cable. Textplate not included.

TRIGGERING DEVICES FOR THE HOT QUICK CODER

The print cycle of the HQC-100 Hot Quick Coder can be initiated or “triggered” in a number of ways, including a foot pedal switch, production line mounted microswitch or a variety of photocells. Universal offers the following standard triggering systems in kit form which includes all the required hardware and complete installation instructions.



Stock Number: HQC-100-FPT

Description: Foot Pedal Trigger Kit

The Foot Pedal Trigger is designed for manual initiation of the marking cycle. This triggering device is commonly used when the coder is bench mounted and products are manually placed under the marking head for imprinting. The HQC-100-FPT Kit includes a Foot Pedal Switch, an 8 Foot Cable and installation instructions.



Stock Number: HQC-100-MST

Description: Micro-Switch Trigger Kit

The HQC-100-MST Micro-Switch is a contact trigger used to initiate the print cycle of the HQC. This unit is permanently mounted to the production line and has a 2.5” long trip lever with a low (2.5 Oz.) operating force. Body Dimensions: 2.1” x 1.55” x 0.84”.

The HQC-100-MST Kit includes a Microswitch, Dust Proof Enclosure, 6 Foot Cable, Mounting Screws and installation instructions.



Stock Number: HQC-100-PCT-D

Description: Photocell Trigger Kit

The HQC-100-PCT-D is a compact NPN, intelligent reflective beam photocell which is used for non-contact triggering of the HQC marking cycle. This photocell features both automatic and manual calibration options, digital readout, and a sensing range of up to 11.81” (300mm). This sensor excels in applications where product shape, color variations and even clear packaging materials can cause other photocells to fail. Body Dimensions: 1.4” x 0.785” x 0.48”.

The HQC-100-PCT-D Kit includes the Photocell, Mounting Bracket, 6 Foot Cable and installation instructions. IP-67 Rated for harsh, wet environments.



Stock Number: HQC-100-PCT-LR

Description: Photocell Trigger Kit - Long Range

The HQC-100-PCT-LR is a compact, long range retro-reflective Photocell which is used for non-contact triggering of the HQC marking cycle. This unit has an effective range up to 10 feet and is rated for harsh environments and suitable for installation in wet areas. Body Dimensions: 2.6” x 1.21” x 0.48”.

The HQC-100-PCT-LR Kit includes the Photocell, mounting bracket, 6 foot cable and 3” diameter reflector. (Not recommended for sensing clear plastic or glass containers.)

KORTHO HIGH-TEMP RIBtype® SILICONE TYPE

The KORTHO Hot Quick Coder utilizes High-Temp RIBtype® Silicone type. This interchangeable ribbed type is available in a variety of sizes as shown below. The High-Temp rubber type is for the KORTHO Hot Quick Coder only. All boxed sets contain an assortment of characters, including punctuation, in varying quantities. The chart below shows the quantity of each character in our listed boxed sets.

A + ASSORTMENT																										
CHARACTER	A	B	C	D	E	F	G	H	I	J	K	L	M	N	O	P	Q	R	S	T	U	V	W	X	Y	Z
QUANTITY IN SET	7	5	5	5	7	5	5	5	5	5	5	5	5	7	5	5	3	5	5	5	5	5	5	3	3	5
CHARACTERS	Å	Ä	Ö	Ü	Æ	Ø	1	2	3	4	5	6	7	8	9	0	.	,	-	/						
QUANTITY IN SET	2	2	2	2	2	2	2	2	2	2	2	2	2	2	2	2	1	3	1	1						

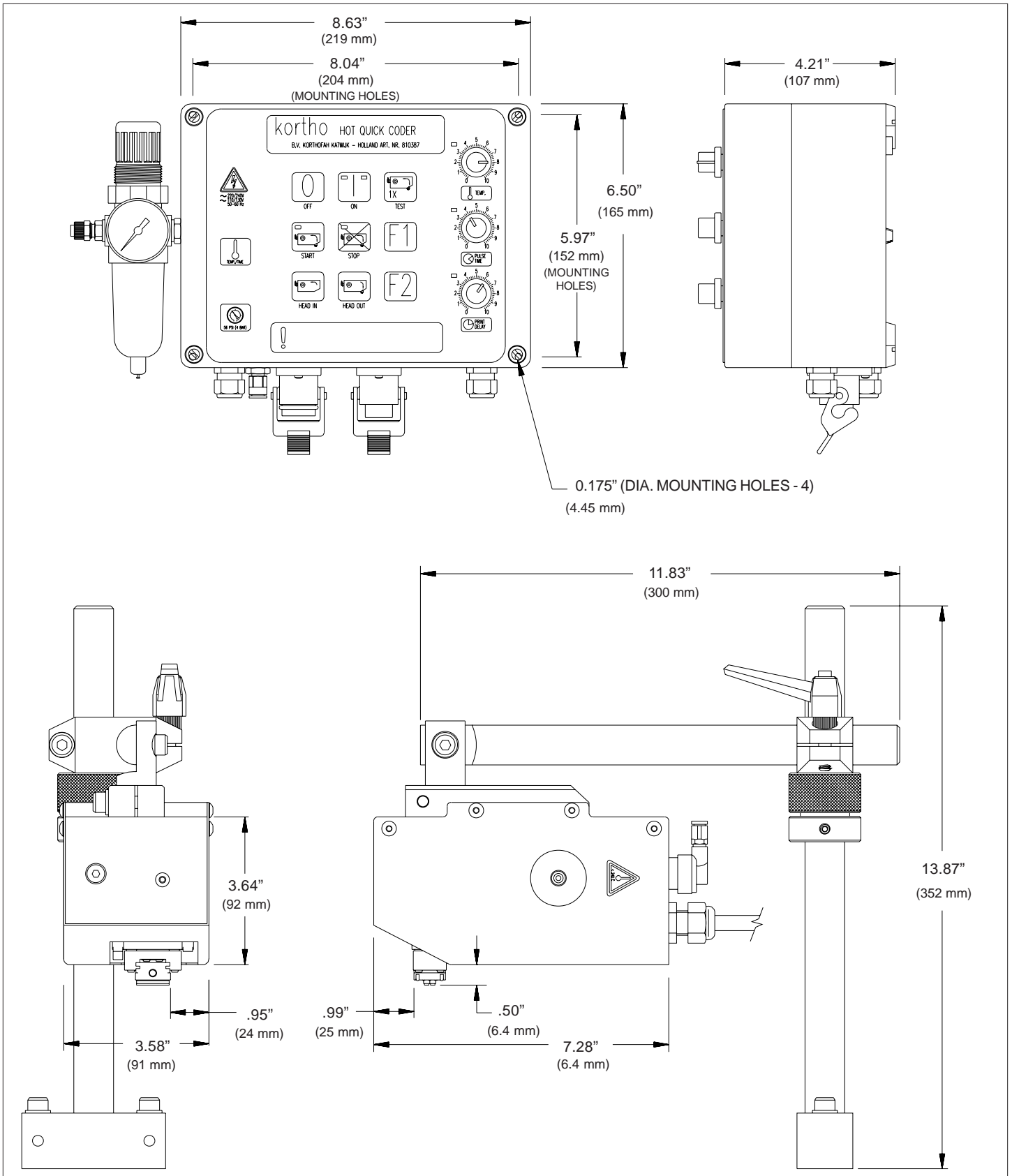
C + ASSORTMENT																										
FIGURES	1	2	3	4	5	6	7	8	9	0	.	,	-	/												
QUANTITY IN SET	9	9	9	9	9	9	9	9	9	9	2	3	2	2												

STYLE NO.	*TYPE FACE HEIGHT	LETTER TYPE SAMPLE	FIGURE TYPE SAMPLE
2/8	2 mm = 5/64"	DEFGHIJKLMNOPQRSTUVWXYZAB	012345678901234567890123456789
2/10	2.5 mm = 3/32"	CDEFGHIJKLMNOPQRSTUVW	012345678901234567890123456
2/12	3 mm = 1/8"	XYZABCDEFGHIJKLMNO	56789012345678901234567
2/14	3.5 mm = 9/64"	PQRSTUVWXYZABCDEFGHI	78901234567890123456
2/16	4 mm = 5/32"	GHIJKLMNOPQRSTU	78901234567890123
2/20	5 mm = 3/16"	VWXYZABCDEFGHI	456789012345678

* TYPE FACE HEIGHTS ARE APPROXIMATE

KORTHO HIGH-TEMP RIBtype® SILICONE TYPE		
STYLE NO.	STOCK NO. A+ ASSORTMENT	STOCK NO. C+ ASSORTMENT
2/8	UR-28A+	UR-28C+
2/10	UR-210A+	UR-210C+
2/12	UR-212A+	UR-212C+
2/14	UR-214A+	UR-214C+
2/16	UR-216A+	UR-216C+
2/20	UR-220A+	UR-220C+

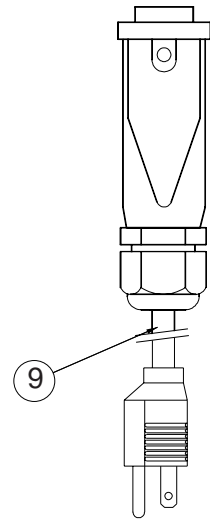
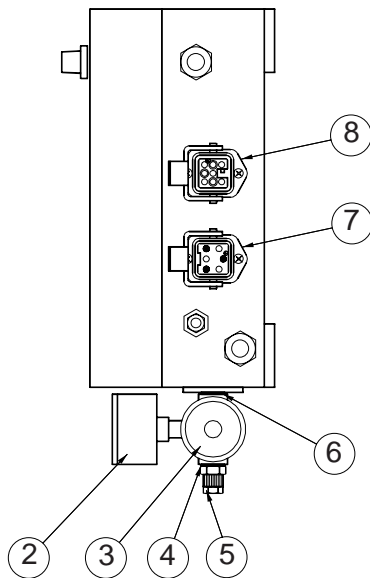
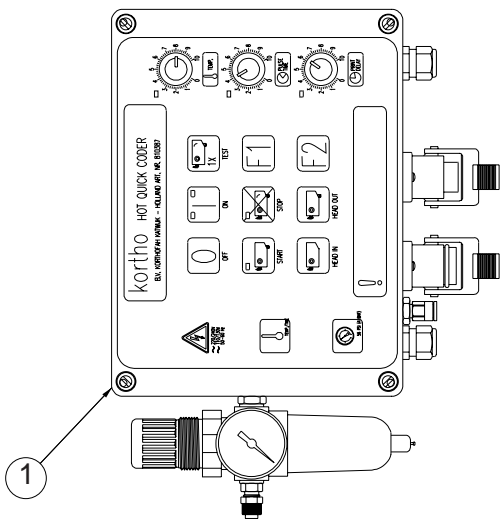
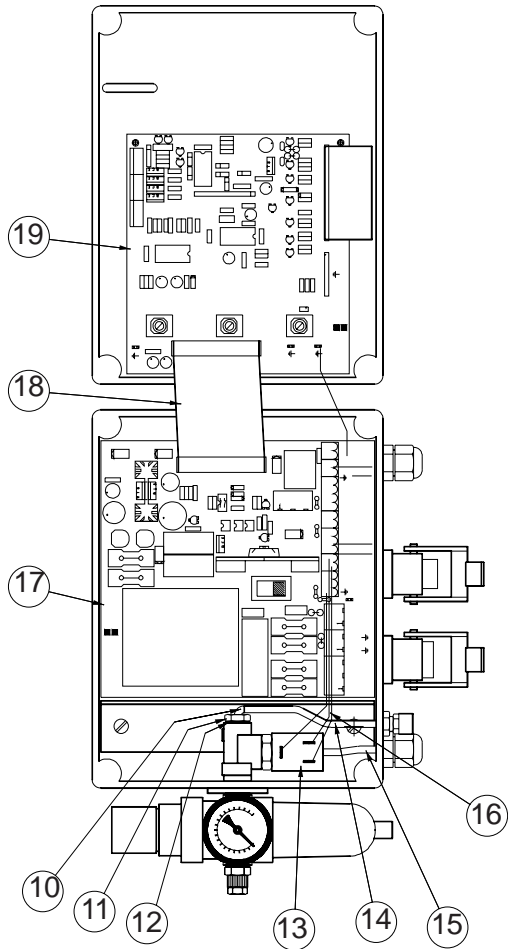
KORTHO HQC-100 HOT QUICK CODER SPECIFICATIONS



Print Area: 0.472" X 0.945" - (12 x 24 mm)
Printing Speed Max: 300 Prints/min.
Product Speed Max: 196 Ft./min. - (60m/min.)
Working Pressure: 56 PSI - (4 bar)

Electrical: 110-130 VAC/1 A.
Electrical: 220-240 VAC/0.5 A.
Coder Weight: 3.75 Lbs. - (1.7 Kg.)
Control Weight: 4.41 Lbs. - (2 Kg.)

KORTHO HQC-100 HOT QUICK CODER CONTROL BOX ASSEMBLY



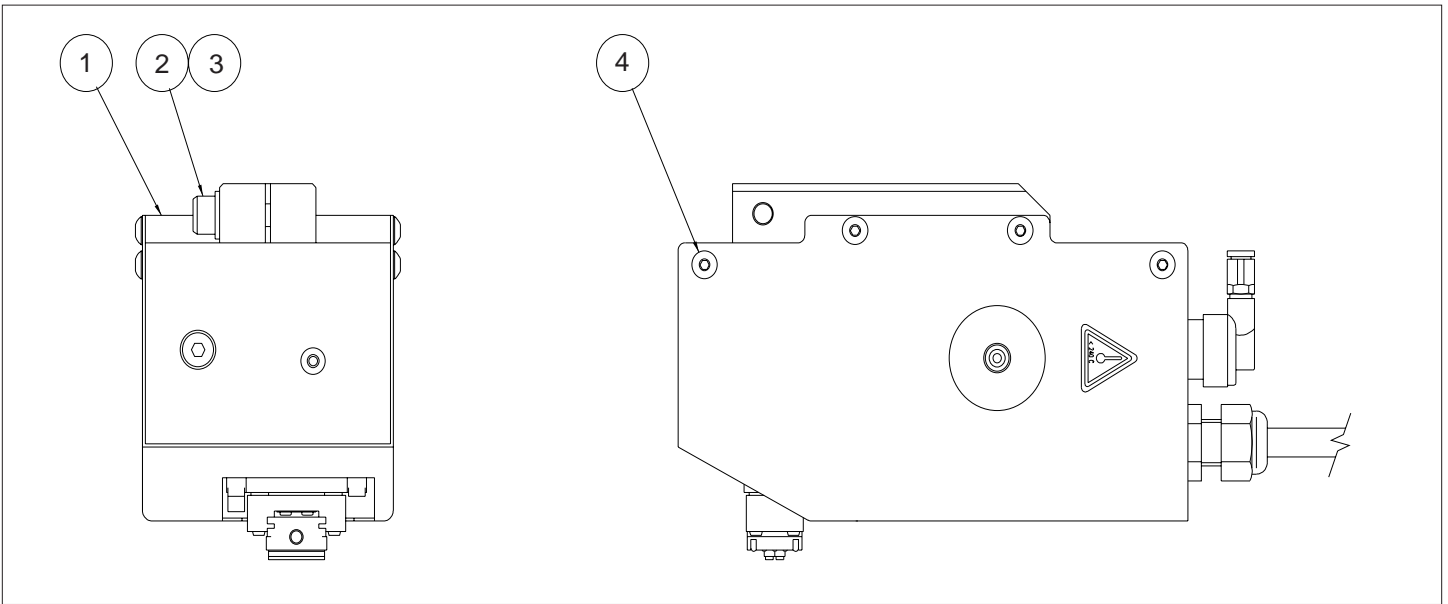
KORTHO HQC-100 HOT QUICK CODER CONTROL BOX PARTS LIST

KEY NO.	PART NUMBER	QTY. REQD.	DESCRIPTION
1	HQC-810387	1	CONTROL BOX, HQC-AT - COMPLETE
2	HQC-156517	1	PRESSURE GAUGE, 0-10 BAR
3	HQC-152765	1	PRESSURE REGULATOR / FILTER ASSEMBLY
4	HQC-152822	1	GASKET
5	HQC-154079	1	STRAIGHT TUBE FITTING - 6MM TUBE
6	HQC-152822	1	GASKET
7	HQC-810542	1	SOCKET, MAIN VOLTAGE, HQC-AT
8	HQC-810539	1	SOCKET, CONTROL BOX/PRINT HEAD, HQC-AT
9	HQC-811869	1	POWER CORD, HQC 115 VAC
10	HQC-154152	1	ELBOW
11	HQC-152819	1	REDUCING COUPLING 1/8XM5
12	HQC-152822	1	GASKET
13	HQC-160564	1	SOLENOID VALVE 5-24 VDC
14	HQC-153268	1	AIR TUBE 6/4 BLACK - 83MM LONG (SUPPLIED IN 1 METER LENGTH)
15	HQC-153268	1	AIR TUBE 6/4 BLACK - 60MM LONG (SUPPLIED IN 1 METER LENGTH)
16	HQC-810708	1	ELECTRICAL CABLE, SOLENOID VALVE
17	HQC-810778	1	POWER SUPPLY ASSEMBLY, HQC
18	HQC-810794	1	CONTROL CABLE PCB, HQC-AT
19	HQC-810781	1	CONTROL BOARD, HQC

Fuse Specifications for 115 VAC 60 Hz Systems

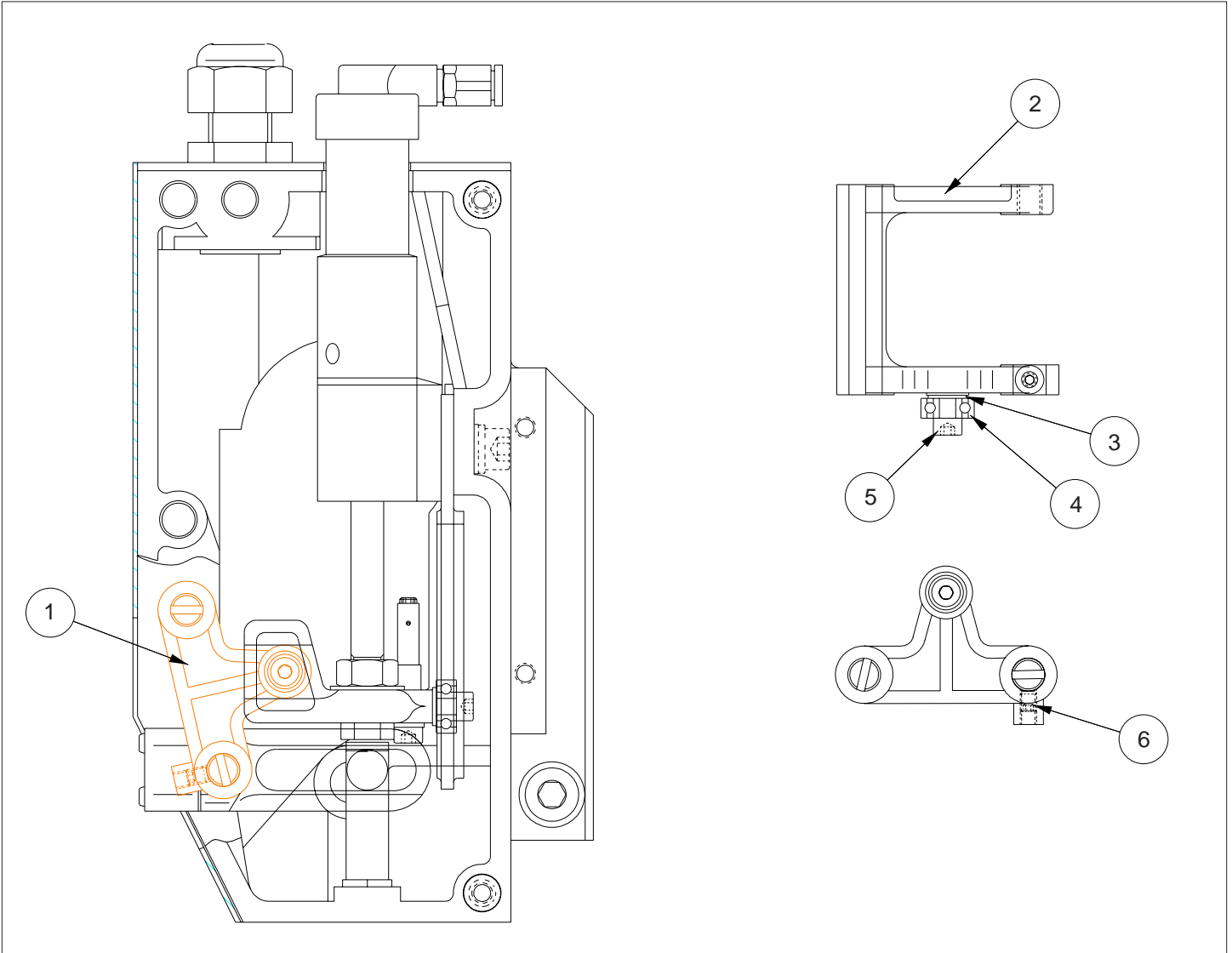
FUSE	PART NUMBER	DESCRIPTION
F1	HQC-155972	3.15 A (5X20) S FUSE
F2	HQC-155972	3.15 A (5 X 20) S FUSE
F3	HQC-159947	315 mA (5 X 20) S FUSE
F4	HQC-159947	315 mA (5 X 20) S FUSE
F5	HQC-161264	1.6 A (5 X 20) S FUSE
F6	HQC-161264	1.6 A (5 X 20) S FUSE

KORTHO HQC-100 HOT QUICK CODER PRINT HEAD ASSEMBLY & PARTS LIST



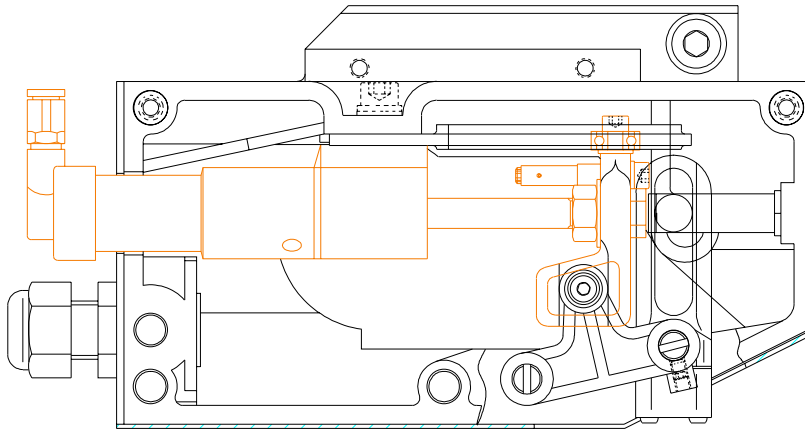
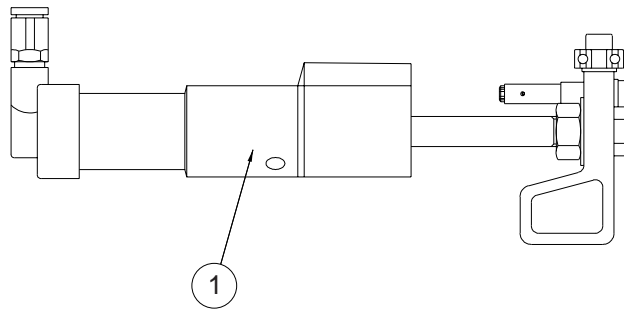
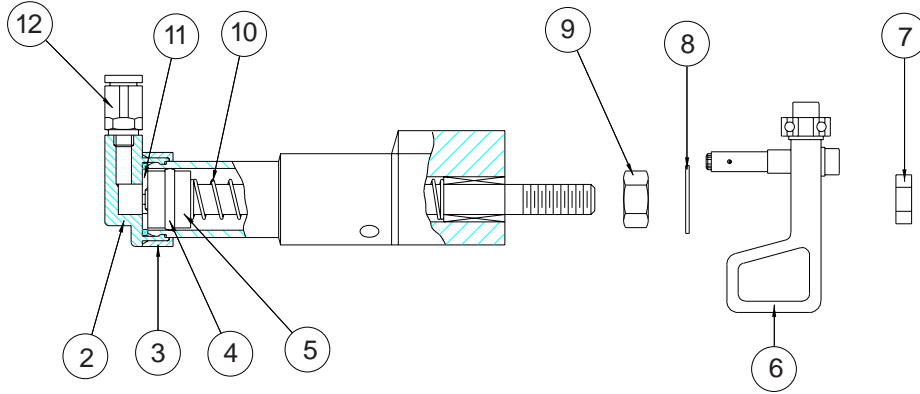
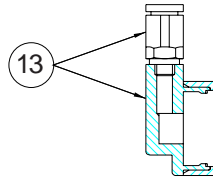
KEY NO.	PART NUMBER	QTY. REQD.	DESCRIPTION
1	HQC-810819	1	PRINthead, HQC-AT
2	HQC-154782	1	CLAMPING SCREW, M8 x 35MM
3	HQC-154755	1	WASHER, 8MM
4	HQC-159399	8	SCREW, M5 X 10MM - BUTTON HEAD

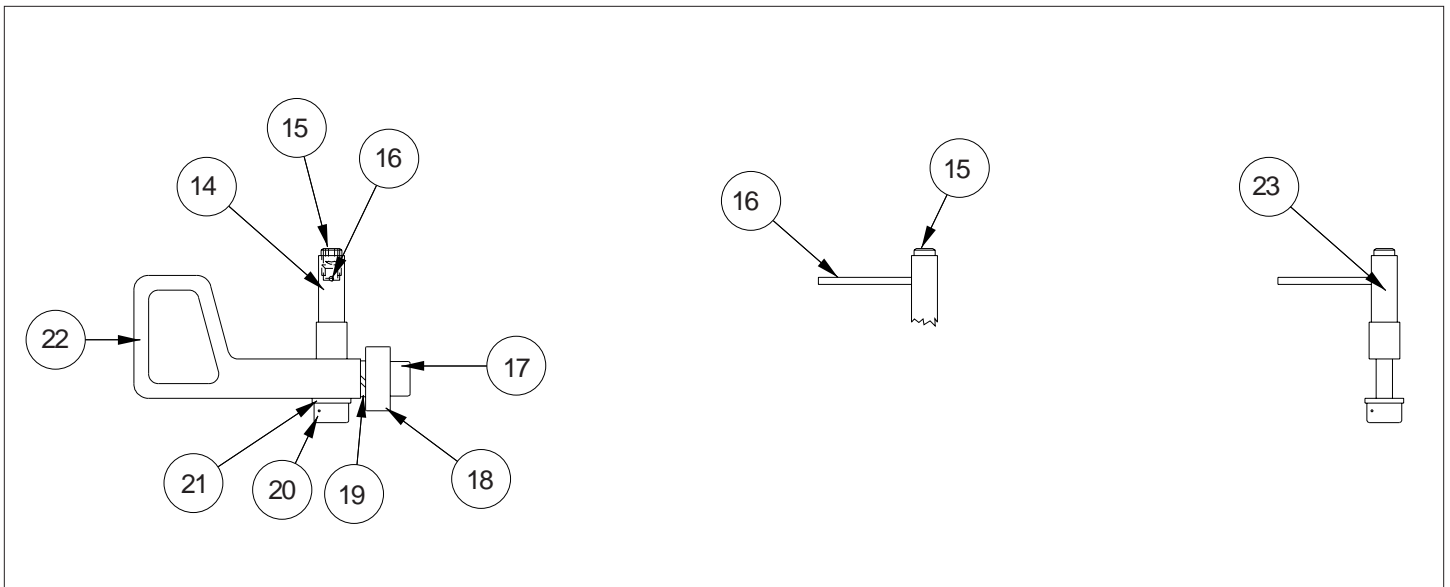
KORTHO HQC-100 HOT QUICK CODER FORK ASSEMBLY & PARTS LIST



KEY NO.	PART NUMBER	QTY. REQD.	DESCRIPTION
1	HQC-803399	1	FORK ASSEMBLY, HQC
2	HQC-304764	1	FORK, PRINT HEAD
3	HQC-156454	1	WASHER, M4 X 3 SS
4	HQC-118087	1	BEARING
5	HQC-151699	1	SCREW, M4 X 12 SS
6	HQC-154318	1	SET SCREW, M4 X 10 SS

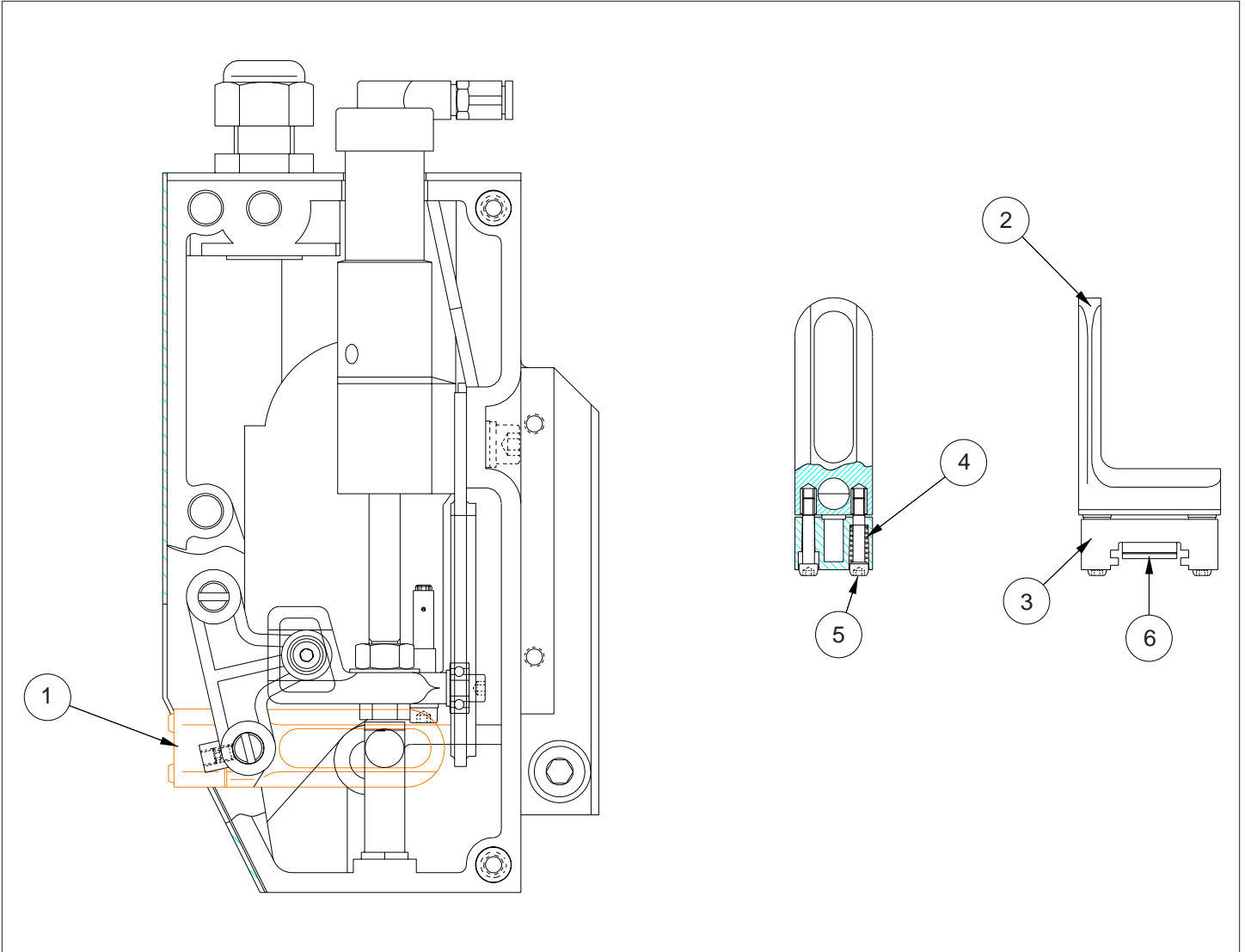
KORTHO HQC-100 HOT QUICK CODER AIR CYLINDER ASSEMBLY & PARTS LIST





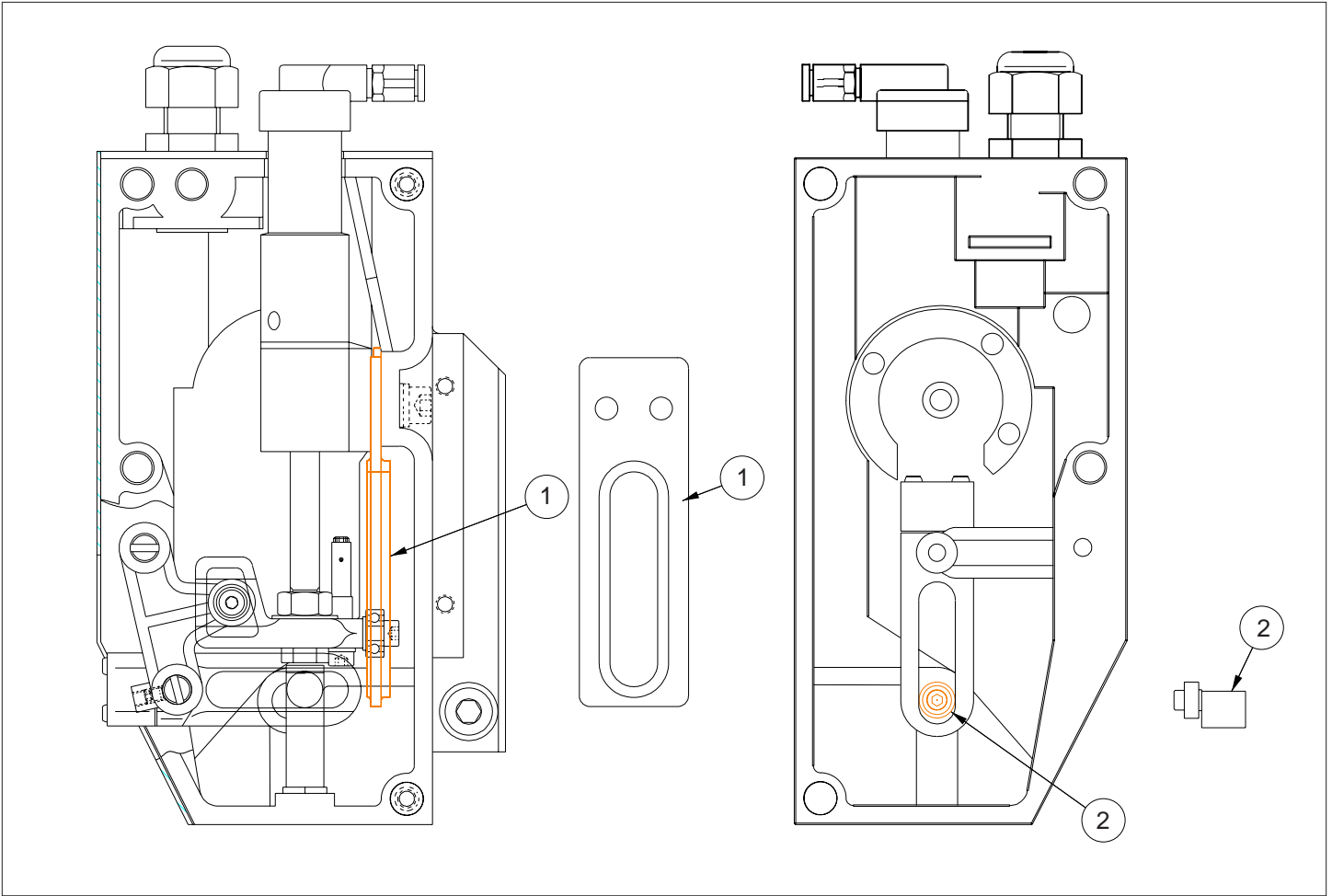
KEY NO.	PART NUMBER	QTY. REQD.	DESCRIPTION
1	HQC-809238	1	AIR CYLINDER ASSEMBLY, HQC-AT - COMPLETE
2	HQC-319365	1	BOTTOM, CYLINDER - HQC
3	HQC-156377	1	RETAINING RING, CYLINDER BOTTOM - HQC
4	HQC-151814	1	PISTON GASKETRING 16X9X2, 1MM
5	HQC-802518	1	PISTON, HQC
6	HQC-809419	1	DRIVING BLOCK, HQC
7	HQC-304859	1	BUSHING, DRIVING BLOCK
8	HQC-163071	1	WASHER
9	HQC-151451	1	HEX NUT, M8 X 1 SS
10	HQC-158127	1	RETURN SPRING, AIR CYLINDER
11	HQC-156389	1	BUFFER RING, HQC
12	HQC-160659	1	STRAIGHT TUBE COUPLING, M5 X 6
13	HQC-809422	1	CYLINDER BOTTOM ASSY. - HQC
14	HQC-315808	1	SPRING HOLDER, HQC
15	HQC-159654	1	SET SCREW, SPRING HOLDER - M4 X 6
16	HQC-317587	1	SPRING, INK ROLL INDEX
17	HQC-151702	1	SCREW, M4 X 16 SS
18	HQC-118087	1	BEARING
19	HQC-151798	1	LOCK WASHER, M4 X 1 SS
20	HQC-151699	1	SCREW, M4 X 12 SS
21	HQC-151798	1	LOCK WASHER, M4 X 1 SS
22	HQC-315919	1	DRIVING BLOCK, HQC
23	HQC-810851	1	DRIVING BLOCK/SPRING HOLDER ASSEMBLY - COMPLETE

KORTHO HQC-100 HOT QUICK CODER TEXT PLATE HOLDER ASSEMBLY & PARTS LIST



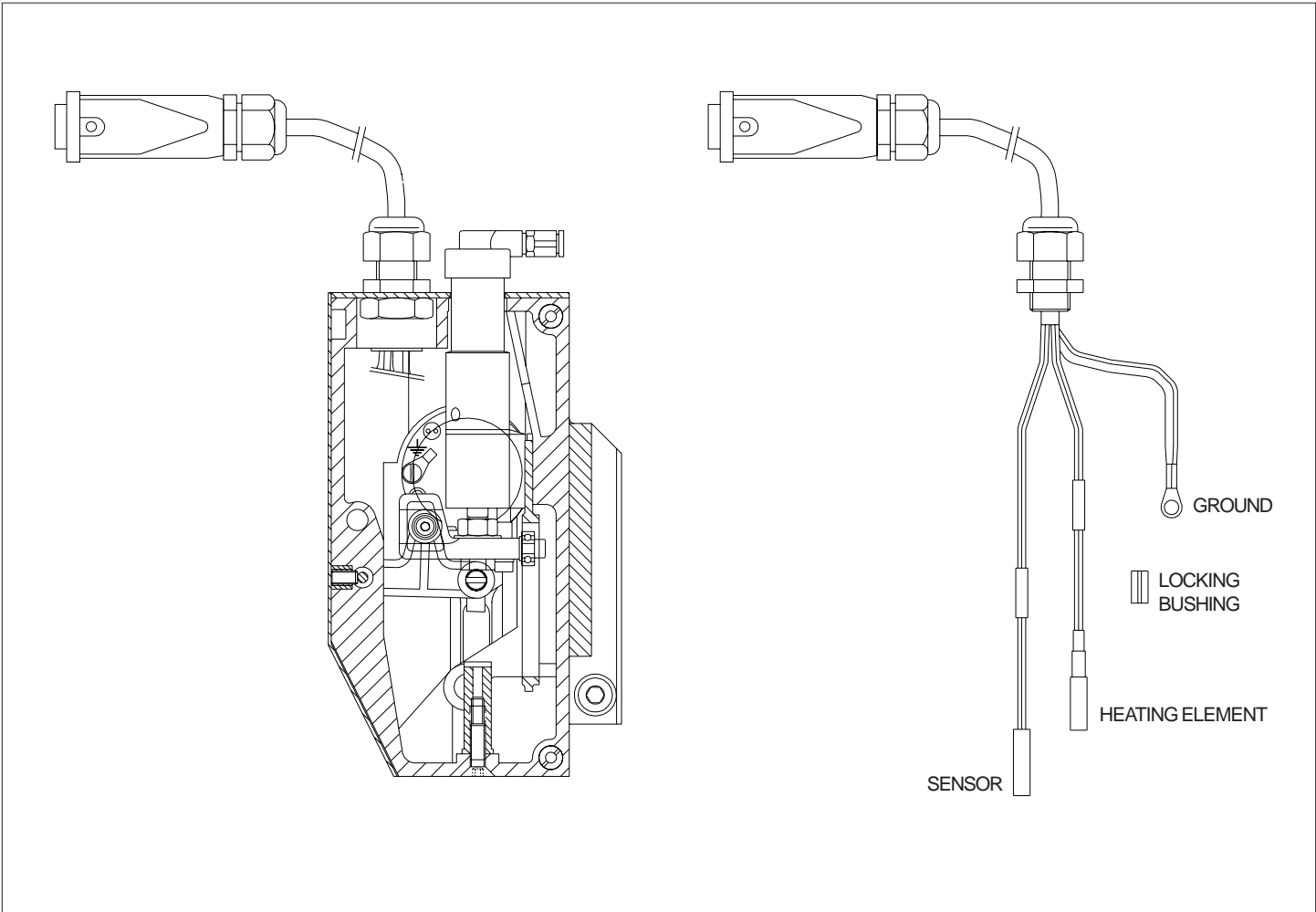
KEY NO.	PART NUMBER	QTY. REQD.	DESCRIPTION
1	HQC-809855	1	TEXT PLATE HOLDER ASSEMBLY, HQC - COMPLETE
2	HQC-802801	1	GUIDE BRACKET
3	HQC-809842	1	TEXT PLATE HOLDER, HQC
4	HQC-126572	2	COMPRESSION SPRING
5	HQC-304818	4	SCREW, PRINTING HEAD
6	HQC-304999	1	SPRING CLIP, PRINTING HEAD

KORTHO HQC-100 HOT QUICK CODER CAM HOLDER & PARTS LIST



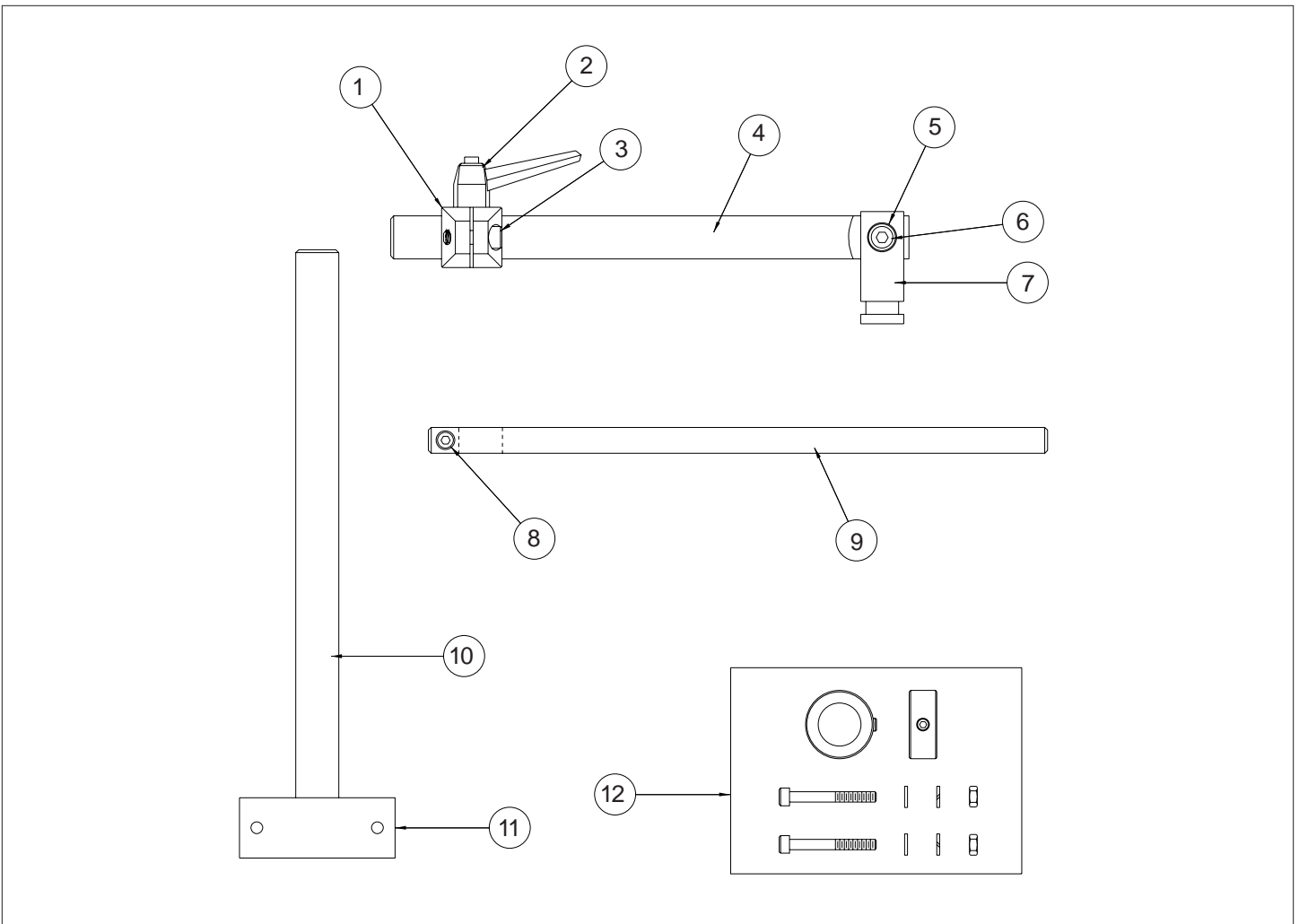
KEY NO.	PART NUMBER	QTY. REQD.	DESCRIPTION
1	HQC-316454	1	CAM HOLDER, HQC
2	HQC-802941	1	ECCENTRIC BRASS PLUG WITH BALLBEARING

**KORTHO HQC-100 HOT QUICK CODER
HEATING ELEMENT ASSEMBLY & PARTS LIST**



KEY NO.	PART NUMBER	QTY. REQD.	DESCRIPTION
1	HQC-814937	1	HEATING ELEMENT ASSEMBLY-115 VAC ONLY
	HQC-810807		HEATING ELEMENT ASSEMBLY-230 VAC ONLY

KORTHO HQC-100 HOT QUICK CODER MOUNTING BRACKET ASSEMBLY & PARTS LIST



KEY NO.	PART NUMBER	QTY. REQD.	DESCRIPTION
ALL	HQC-809477	1	MOUNTING BRACKET ASSEMBLY, HQC - COMPLETE
1	HQC-316034	1	CROSS CLAMP BLOCK - HQC
2	HQC-158897	1	HANDLE, M8 X 25 - HQC
3	HQC-153478	1	CLAMPING SCREW, M8 X 20
4	HQC-315992	1	MOUNTING ARM - HQC
5	HQC-153452	1	LOCK WASHER, M8 X 1
6	HQC-155174	1	SOCKET HEAD CAP SCREW, M8 X 25
7	HQC-316664	1	MOUNTING STUD - HQC
8	HQC-154429	1	SOCKET HEAD CAP SCREW, M6 X 25
9	HQC-316062	1	PLATEN - HQC
10	HQC-315989	1	MOUNTING COLUMN - HQC
11	HQC-316018	1	MOUNTING BASE - HQC
12	HQC-809464	1	SHAFT COLLAR & HARDWARE KIT